



INSTRUCTION BULLETIN

No. 340086
Machine: 800, 810
Published: 8-03
Rev. 01

NOTE: DO NOT DISCARD the Parts List from the Instruction Bulletin. Place the Parts List in the appropriate place in your machine manual for future reference. Retaining the Parts List will make it easier to reorder individual parts and will save you the cost of ordering an entire kit.

NOTE: Numbers in parenthesis () are reference numbers for parts listed in Bill of Materials.

Installation Instructions for Kit number 380610

SYNOPSIS / PROBLEM:

This kit contains the parts needed to install a heater/pressurizer on the cab of the model 800/810 Gas/LPG sweeper. Please follow step-by-step instructions.

SPECIAL TOOLS / CONSIDERATIONS: Hand drill, 7/32" drill bit, 1.00" hole saw

(Estimated time to complete: 6 hours)

INSTALLATION:

(Refer to FIG. 1 thru 8)

FOR SAFETY: Before leaving or servicing machine, stop on level surface and set parking brake. Then turn off machine and remove key.

1. Open the engine cover and side door.
2. Drain the radiator into a pan.
3. Use the illustrations in FIG. 1 to install the hoses (1 and 14). (Refer to FIG. 1)

NOTE: Use the illustration that corresponds to your machine (Gas or LPG). (Refer to FIG. 1)

4. Install the manual heater valve (2) into the two new hoses (1 and 14). Use two of the worm drive clamps (4). (Refer to FIG. 1)
5. Install the two longer heater hoses (5 and 10) onto the manual heater valve (2). Use two of the worm drive clamps (4). (Refer to FIG. 1)
6. Install the nylon sleeve (9) onto the two longer hoses (5 and 10). (Refer to FIG. 1)
7. Route the two longer hoses (5 and 10) out the back of the engine compartment and up the back, left side of the machine cab. (Refer to FIG. 1)
8. Install the hose clamp (11) over the two long hoses (5 and 10) and sleeve (9). Attach the clamp to the back of the cab. (Refer to FIG. 1)
9. Install the cable assembly (3) into the hole on the left side of the panel in the operator compartment. (a hole may need to be drilled on very early models) Route the cable into the engine compartment and connect it to the manual heater valve (2). (Refer to FIG. 1)

10. **LATER VERSION CAB:** If your machine has a later version cab, *with* the heater/pressurizer mount holes already in the roof panel, **no rework is necessary**. Remove the four hex screws holding the mount hole cover panel to the top of the roof. Discard the cover panel. (Refer to FIG. 1 and 3)
11. **EARLIER VERSION CAB:** If your machine has a earlier version cab, *without* the heater/pressurizer mount holes already in the roof panel, **rework is necessary**. Use the dimensions in FIG. 4 to mark, drill, and cut the pressurizer mount holes in the top of the cab roof. (Refer to FIG. 1 and 4)
12. Install the grommet (15) in the larger hole to the left of the rectangle cutouts. (Refer to FIG. 1, 3, and 4)
13. Position the heater/pressurizer assembly (6) on the roof of the cab. Make sure gasket is in place between unit and cab. Center the unit over the mount holes and install the six screws (7) and washers (8). Hand tighten tight. (Refer to FIG. 1)
14. Connect the two longer hoses (5 and 10) to the two fittings on the left side of the heater/pressurizer assembly. Use the diagram in FIG. 1 to make the correct connections. Make sure to use two worm drive clamps (4) when attaching the hoses (5 and 10) to the fittings. (Refer to FIG. 1)
15. Go into the operator compartment. Locate the overhead panel with the dome light and wiper switch. Install the parts listed in FIG. 2 that are included with the heater/pressurizer assembly. (Refer to FIG. 2)
16. **LATER VERSION CAB:** If your machine has a later version cab, *the heater/pressurizer wire harness is already installed in the cab*. Connect the wire harness to the three position switch. (Refer to FIG. 2, 3, 5, 6, 7, and 8)
17. **EARLIER VERSION CAB:** If your machine has a earlier version cab, *the heater/pressurizer wire harness is not included or installed in the cab*. The harness must be ordered separate. The part number for the cab harness is 380577. The harness will have to be installed by routing from the three position switch, down the front, left leg of the cab and down to the area where the machine relays are located. (Refer to FIG. 2, 3, 5, 6, 7, and 8)



WARNING: Raised hopper may fall. Engage hopper support arm.

18. The machine will have to be started and the support arm engaged to access the relay panel cover. Remove the relay panel cover and install the heater/pressurizer relay (16) on the panel. Connect the cab harness (380577) to the relay (16). Reinstall the relay panel cover. (Refer to FIG. 2, 3, 5, 6, 7, and 8)
19. Mount the heater/pressurizer circuit breaker (17) in the area just ahead of the back of the existing machine circuit breakers. Use existing mount holes. Connect the cab harness (380577) to the circuit breaker (17). Lower the hopper. (Refer to FIG. 2, 3, 5, 6, 7, and 8)
20. Start the machine and use the cable (3) to open the manual heater valve. Run the engine until one of the long hoses (5 and 10) feels warm. Shut off the engine. (Refer to FIG. 2)



WARNING: Allow engine coolant to cool before working on radiator. Hot coolant could scald or cause severe burns. If in doubt, let engine cool before releasing pressure in cooling system.

21. Let the engine cool down and slowly remove the radiator cap. Add engine coolant until the radiator is full. Repeat steps 20 and 21 until the coolant system is full.

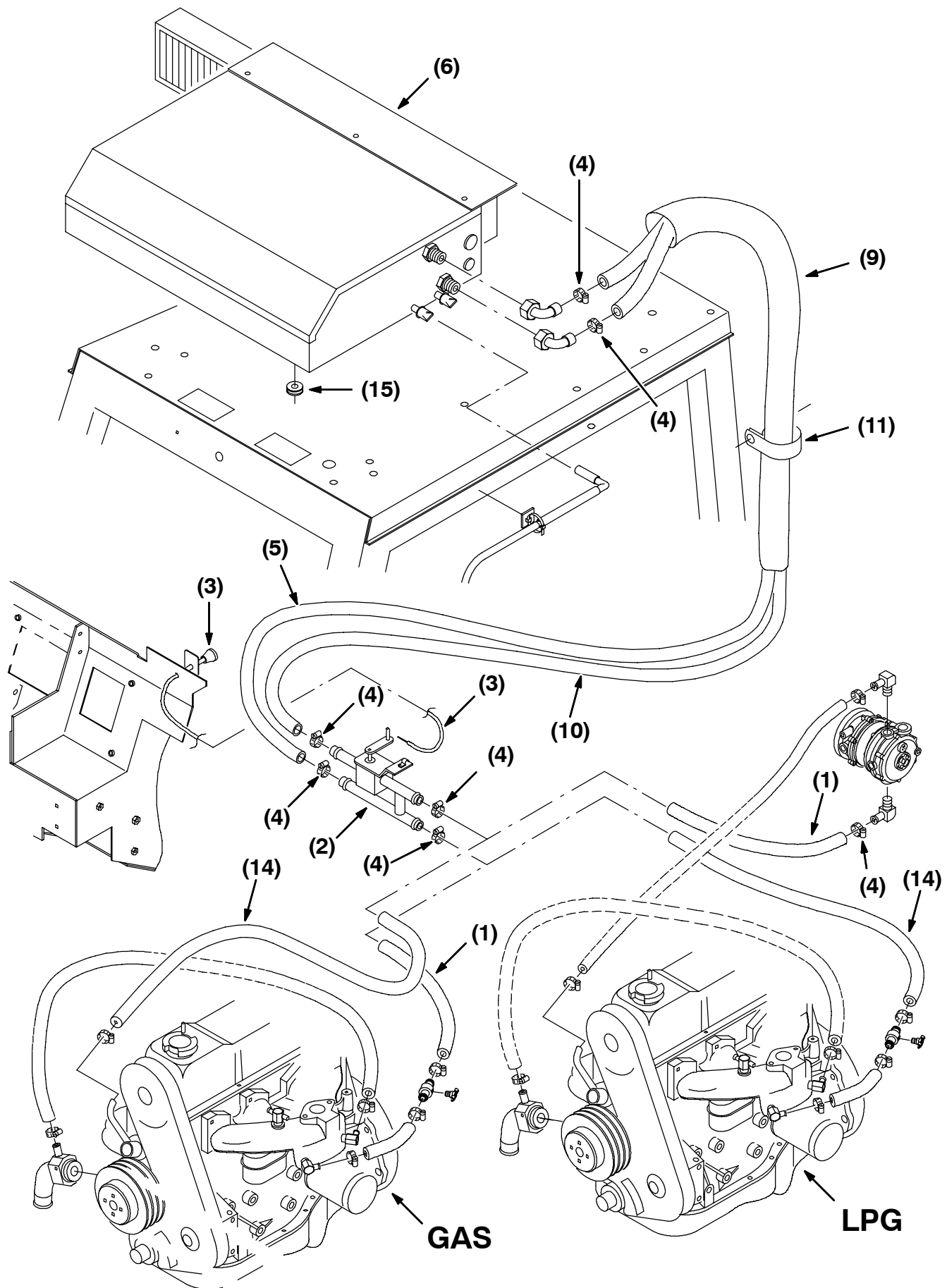


FIG. 1 - Heater Hose Connections And Heater/pressurizer Installation

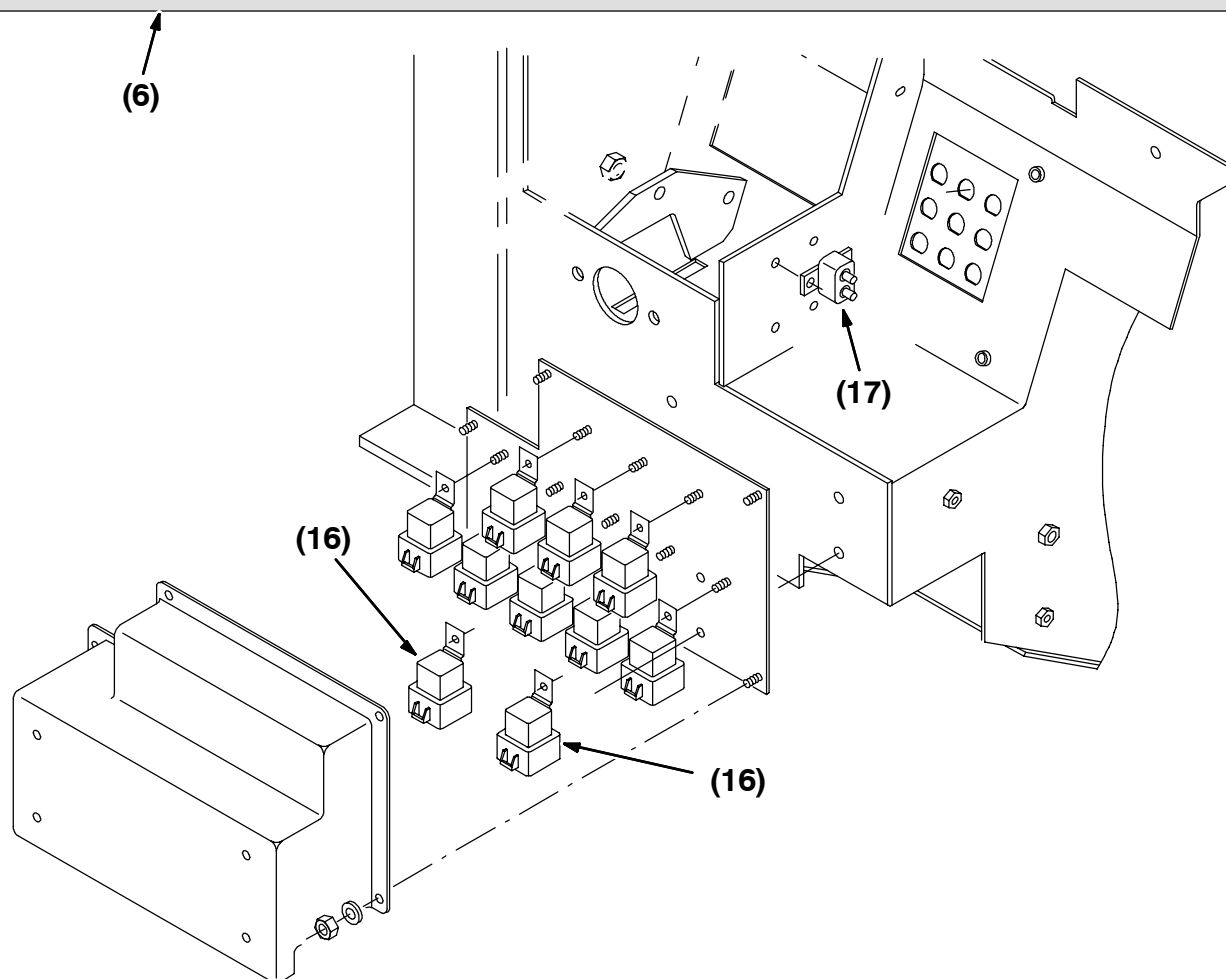
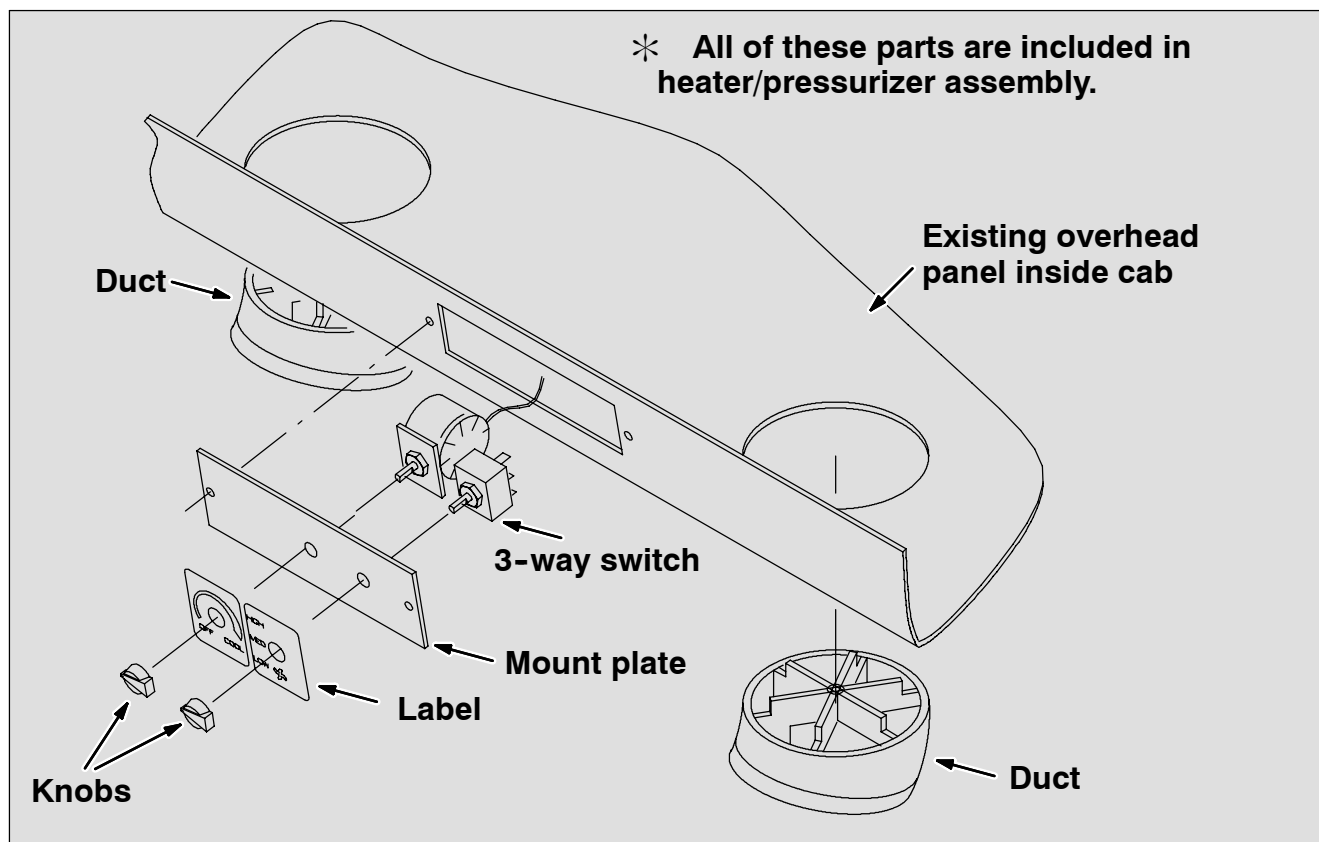


FIG. 2 - Relay, Circuit Breaker, And Pressurizer Assembly

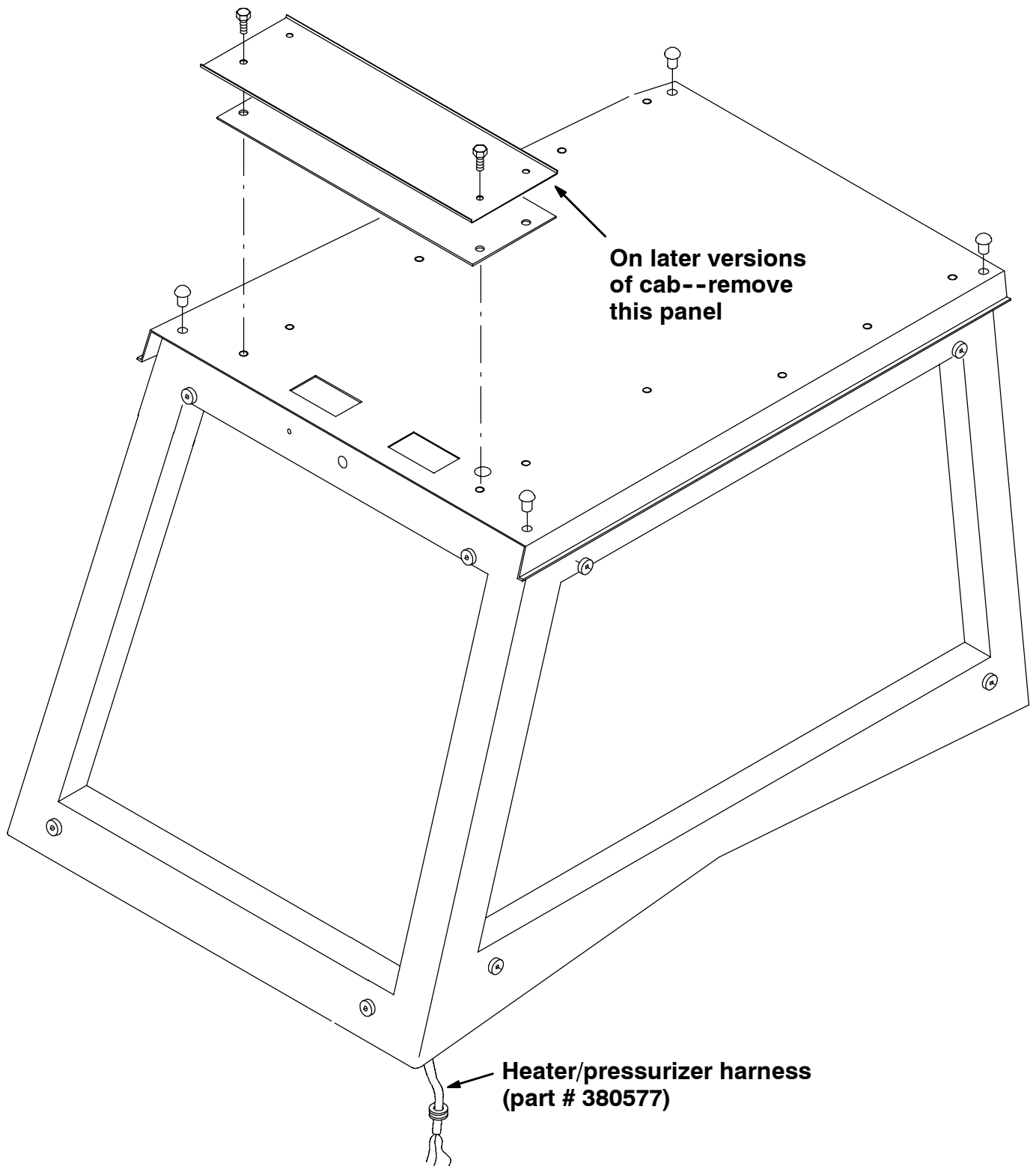


FIG. 3 - Cab And Heater/pressurizer Assembly (latest version of cab)

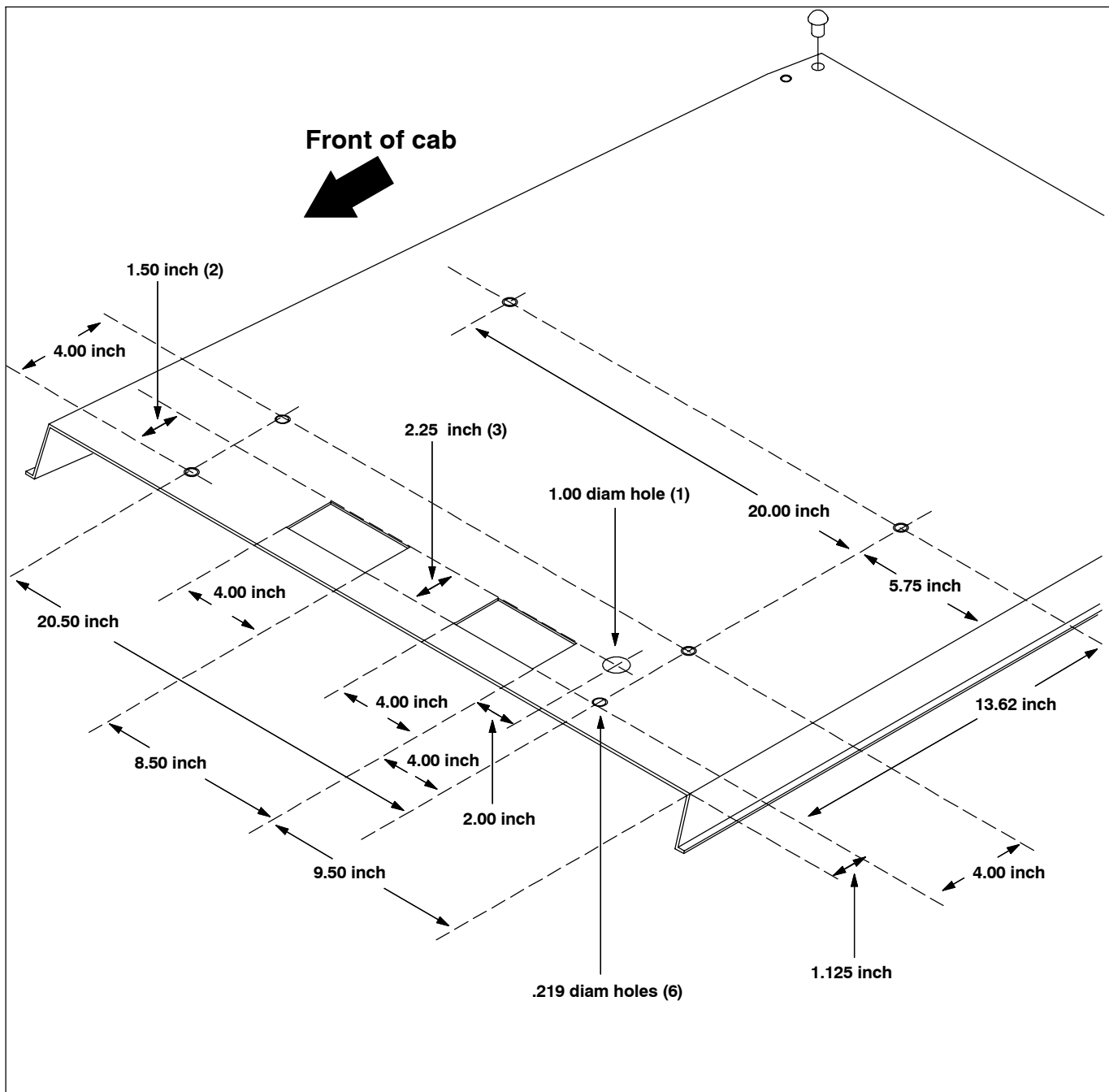


FIG. 4 - Rework Dimensions For Cab Roof (earlier version of cab)

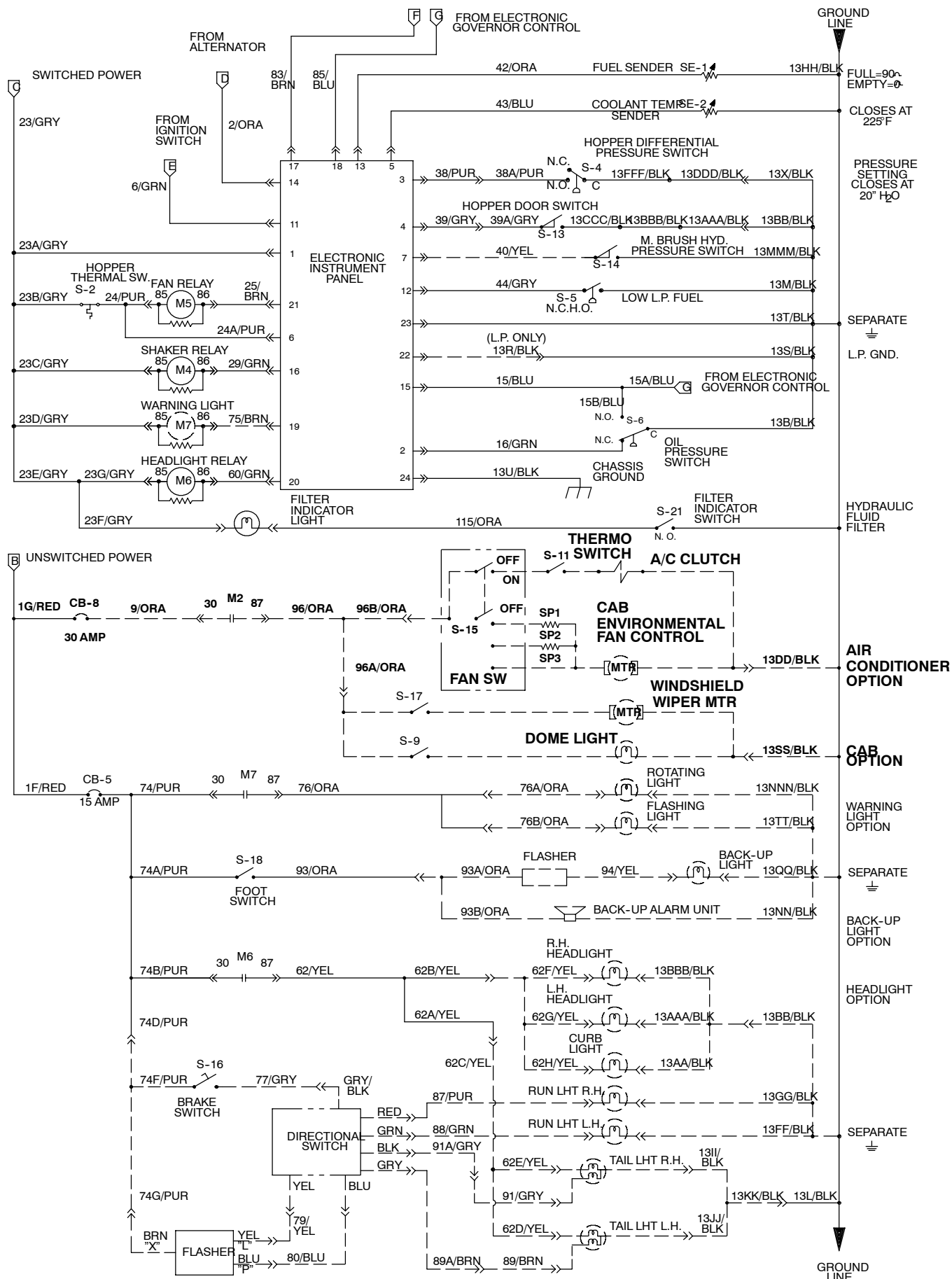


FIG. 5 - Electrical Schematic

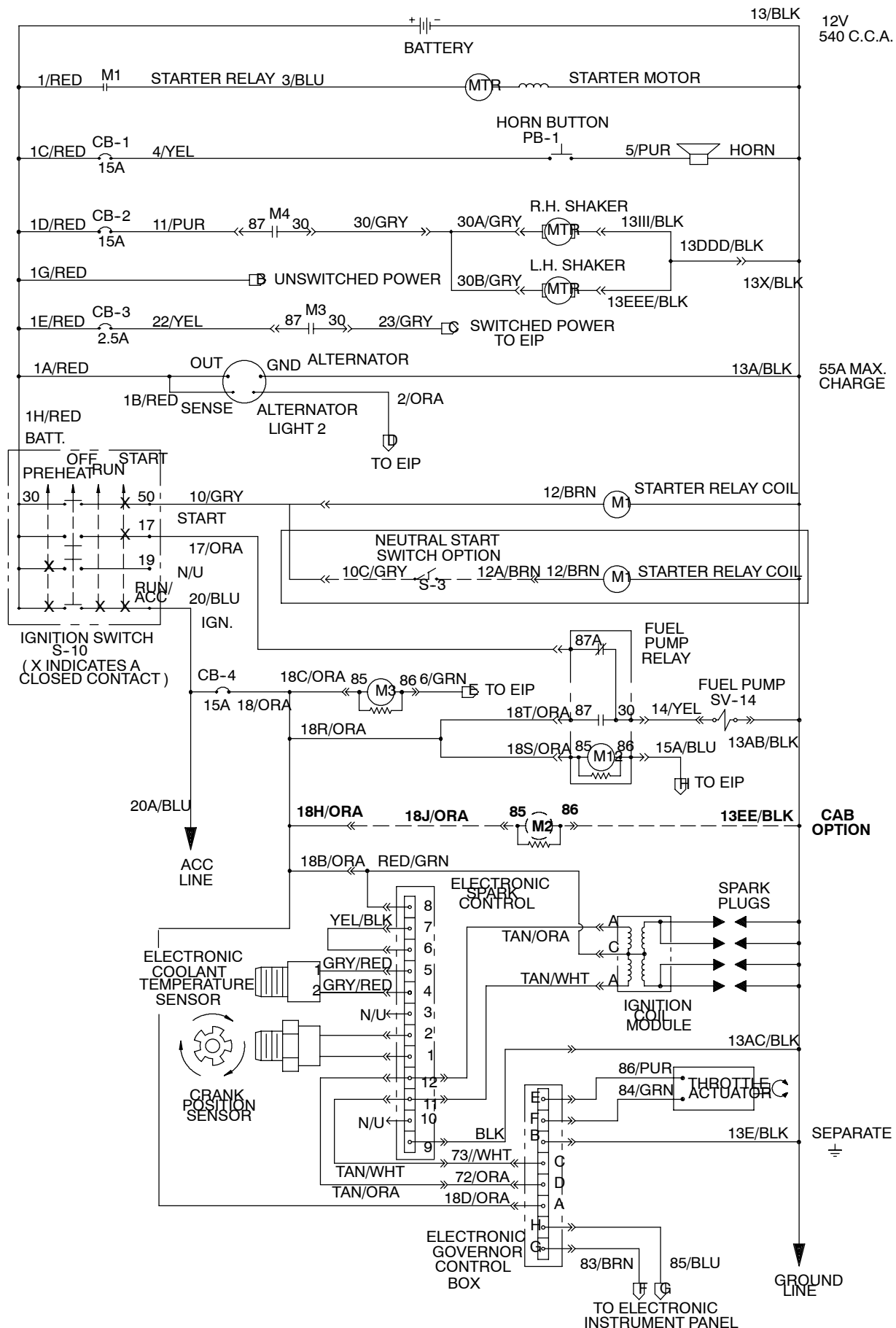


FIG. 6 - Electrical Schematic

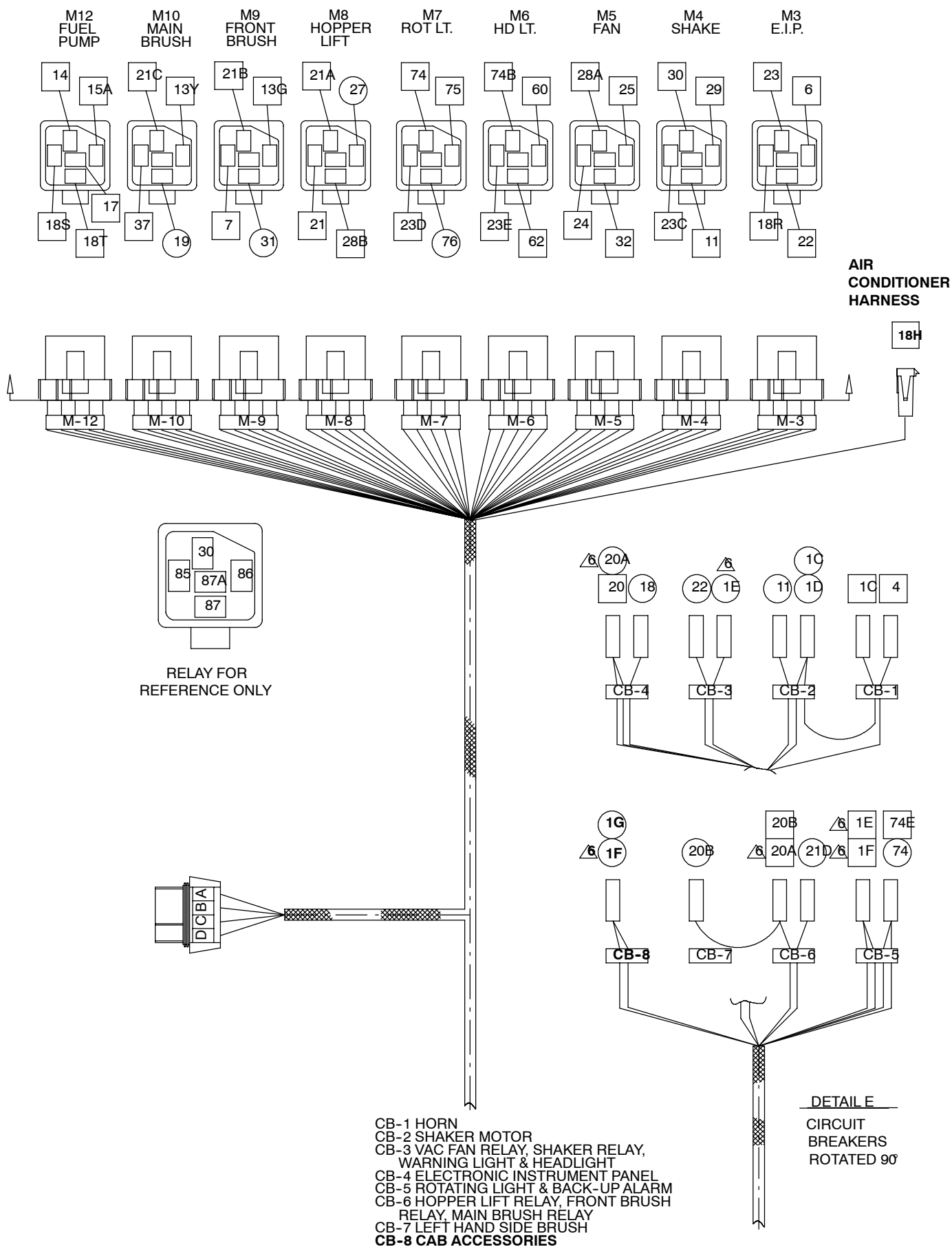


FIG. 7 - Wire Diagram

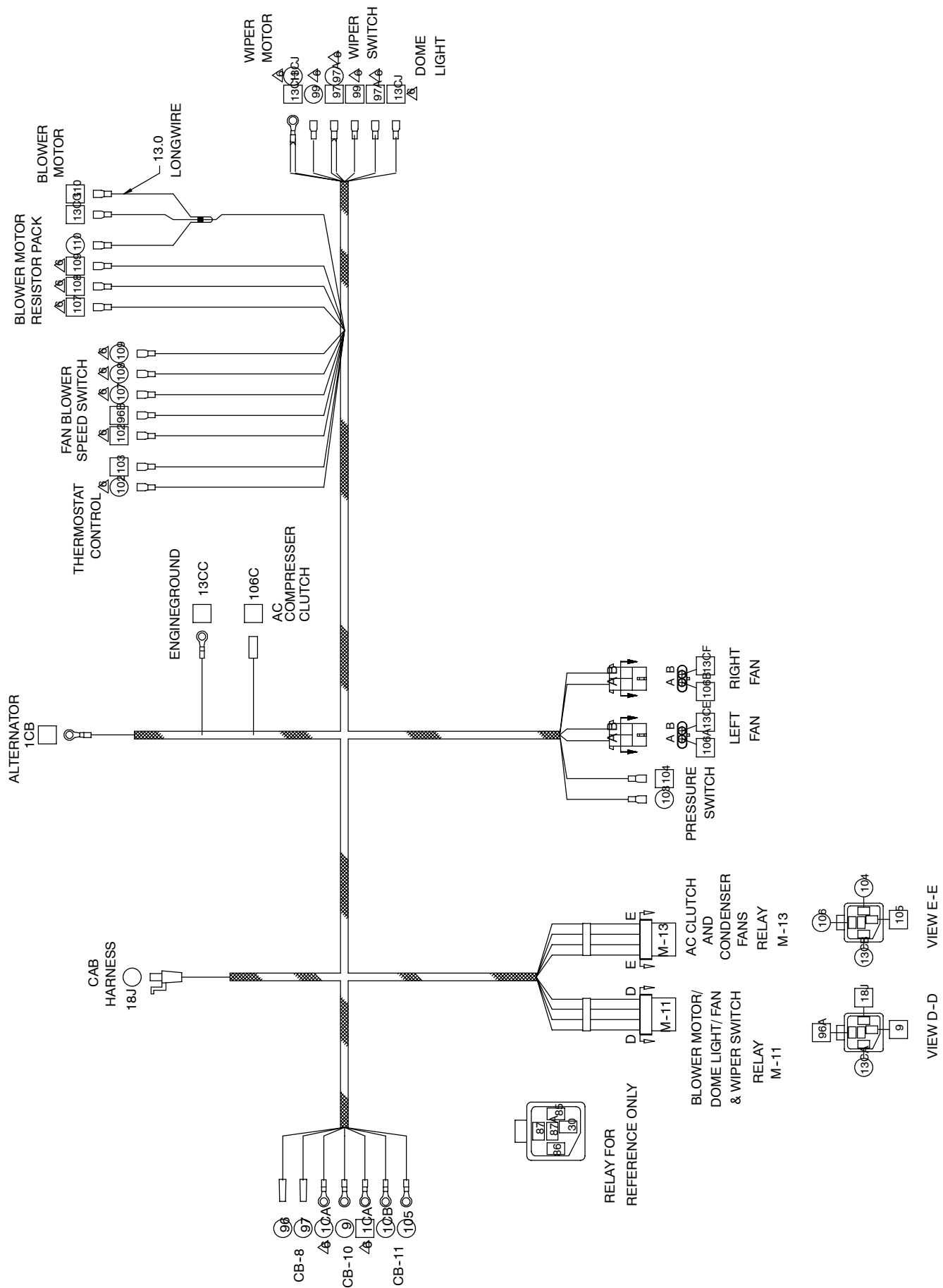


FIG. 8 - Cab Harness (part # 380577)

BILL OF MATERIALS FOR HEATER/PRESSURIZER KIT 380610

Ref.	TENNANT Part No.	Description	Qty.
1	61869	Heater hose, 24.0L	1
2	375728	Manual heater valve	1
3	43558A	Cable assembly	1
4	63810	Worm drive clamp	7
5	380620	Heater hose, 77.0L	1
6	380576	Heater/AC & pressurizer assy.	1
7	12459	M6 thread roller, 20mm	6
8	32490	Flat washer/ .25 inch	6
9	375512	Nylon sleeve, 65.0L	1
10	380621	Heater hose, 80.0L	1
11	86328	Cable clamp	2
12	12459	M6 thread roller, 20mm	2
13	32490	Flat washer/ .25 inch	2
14	61870	Heater hose, 31.0L	1
15	77811	Grommet	1
16	56186	Relay, 12VDC, 40 amp	1
17	374210	Circuit breaker, 20 amp, thermal	1

* ***Heater/pressurizer cab harness (Tennant part number 380577) - - Must be ordered if your machine has a early version cab.***

TENNANT COMPANY
P. O. Box 1452
Minneapolis, MN 55440-1452